

Product image (Para Scope Wide Eye)



Physical Characteristics

material	Al
Dimensions (L x W x H)	150 x 100 x21 [mm]
Mounting Type	Assemble

Electrical Characteristics

Frequency Range	910 MHz ~ 914 MHz(KOREA)
Protocol	Gen2
Hopping Type	FHSS (15Channel)
Channel Bandwith	200 KHz
Transmit Power	30dBm (1W)
RF Port	Input & Output 8Port
I/O Port	Input 4Port, Output 8Port
Interface Port	RS232, TCP/IP
Power Supply	6V, 1.5A(Max)
Power Control Range	12 dB (1 dB step)
Temperature	-10° to 50° (Operating) -20° to 70° (Storage)

Product image (Para Scope)



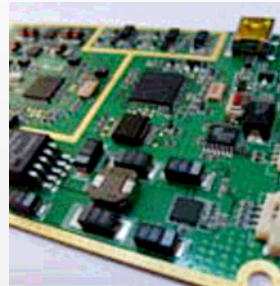
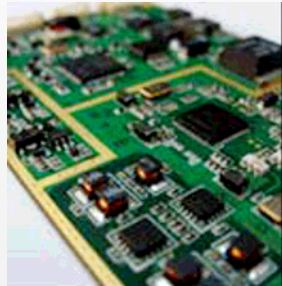
Physical Characteristics

material	ASA
Dimensions (L x W x H)	210 x 210 x43 [mm]
Cable length	3M(default)
Mounting Type	Assemble

Electrical Characteristics

Frequency Range	910 MHz ~ 914 MHz(KOREA)
Protocol	ISO18000-6B, ISO18000-6C, Gen2
Hopping Type	FHSS (15Channel)
Channel Bandwith	200 KHz
Transmit Power	EIRP 4W (Nominal)
Read Range	6M (Nominal)
Power Supply	9V, 1.5A(Max)
Power Control Range	12 dB (1 dB step)
Temperature	-10° to 50° (Operating) -20° to 70° (Storage)
Gain	8 dBi (typical)
V.S.W.R	1.3:1 Max

Product image (Para Scope EM08)



Physical Characteristics

material	FR-4(PCB)
Dimensions (L x W x H)	90 x 55 x 5.5 [mm]
Mounting Type	SMD

Electrical Characteristics

Frequency Range	910 MHz ~ 914 MHz(KOREA)
Air Protocol	Gen2
Hopping Type	FHSS (15Channel)
Channel Bandwith	200 KHz
Transmit Power	30dBm (1W)
RF Port	2 Channel (Tx 2Port, Rx 2Port)
Power Supply	5V, 1.8A(Max)
Power Control Range	12 dB (1 dB step)
Temperature	-15° to 70° (Operating) -40° to 80° (Storage)