

# Chip Ceramic Inductor

## Feature

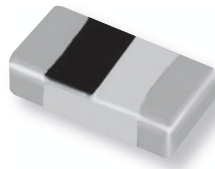
1. Excellent Q characteristic and SRF range
2. Tight inductance tolerance
3. Excellent solderability and suitable for flow and reflow soldering.
4. Lead and halogen free

## Application

1. High frequency application : RF module, cellular phone, smart phone, PC , etc
2. RF resonance and impedance matching circuit

## Ordering Information

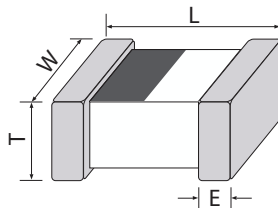
ECI 1005 10N J P N  
 1 2 3 4 5 6



- 1 **Series Type** : EMW Ceramic Inductor
- 2 **Size(mm)** : Length x Width
- 3 **Inductance (nH)**  
 N : Decimal point  
 Ex : 1N0 → 1.0nH , 10N → 10nH , 101 → 100 nH
- 4 **Tolerance** : S : 0.3nH, J : ± 5%
- 5 **Packing**  
 P- Embossed paper tape
- 6 **Termination** : Nickel barrier

## Dimension

Size (EIA)	0603 (0201)	1005 (0402)	1608 (0603)
L	0.60 ± 0.03	1.00±0.10	1.60 ± 0.15
W	0.3 ± 0.03	0.50±0.10	0.80 ± 0.15
T	0.3 ± 0.03	0.50±0.10	0.80 ± 0.15
E (Min/Max)	0.10/0.20	0.10 / 0.30	0.20 / 0.60



**0603 size****Specification**

Part Number	Inductance (nH)	Q (Min.)	L & Q Test Freq. (MHz)	DCR Max. (mΩ)	Rated Current Max. (mA)	SRF Min (MHz)
ECI-0603-1N0SPN	1.0	4	100	150	250	9000
ECI-0603-1N2SPN	1.2	4	100	150	250	9000
ECI-0603-1N5SPN	1.5	4	100	200	230	9000
ECI-0603-1N8SPN	1.8	4	100	220	200	9000
ECI-0603-2N0SPN	2.0	4	100	220	200	8000
ECI-0603-2N2SPN	2.2	4	100	240	200	8000
ECI-0603-2N7SPN	2.7	5	100	260	200	7000
ECI-0603-3N0SPN	3.0	5	100	280	180	7000
ECI-0603-3N3SPN	3.3	5	100	300	180	6000
ECI-0603-3N9SPN	3.9	5	100	350	170	6000
ECI-0603-4N3SPN	4.3	5	100	400	150	5000
ECI-0603-4N7SPN	4.7	5	100	400	150	5000
ECI-0603-5N1SPN	5.1	5	100	450	150	5000
ECI-0603-5N6SPN	5.6	5	100	450	150	4200
ECI-0603-6N2J PN	6.2	5	100	500	150	3800
ECI-0603-6N8J PN	6.8	5	100	550	150	3500
ECI-0603-7N5J PN	7.5	5	100	550	150	3300
ECI-0603-8N2J PN	8.2	5	100	600	150	3200
ECI-0603-10NJ PN	10	5	100	700	150	2800
ECI-0603-12NJ PN	12	5	100	800	100	2400
ECI-0603-15NJ PN	15	5	100	1000	100	2200
ECI-0603-18NJ PN	18	5	100	1400	100	2100
ECI-0603-22NJ PN	22	5	100	1600	100	1800
ECI-0603-27NJ PN	27	4	100	2000	50	1800
ECI-0603-33NJ PN	33	4	100	2400	50	1700
ECI-0603-39NJ PN	39	4	100	2600	50	1500
ECI-0603-47NJ PN	47	4	100	3000	50	1300
ECI-0603-56NJ PN	56	4	100	3500	50	1100
ECI-0603-68NJ PN	68	4	100	3500	50	1100
ECI-0603-82NJ PN	82	4	100	3800	50	1100
ECI-0603-101J PN	100	4	100	4000	40	1000

## 1005 size

### Specification

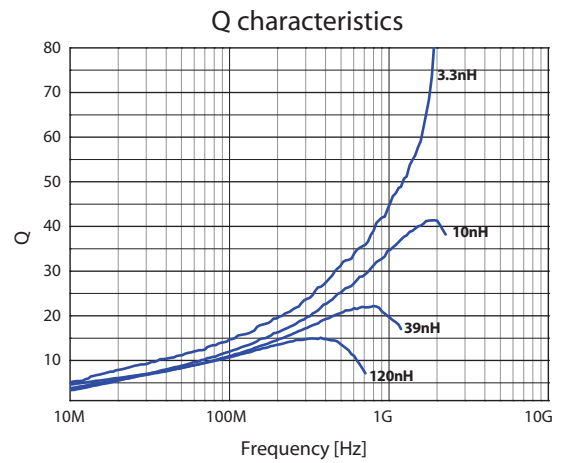
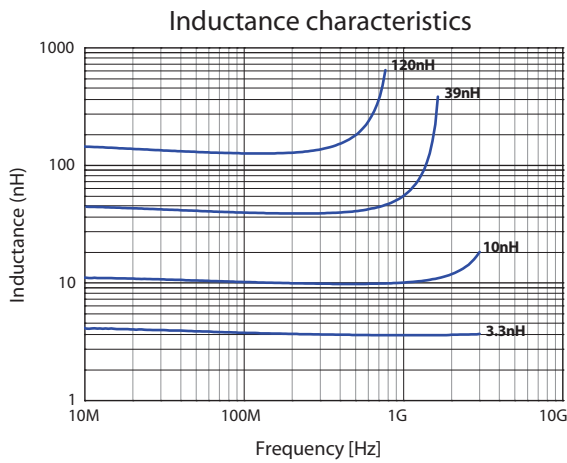
Part Number	Inductance (nH)	Q (Min.)	L & Q Test Freq. (MHz)	DCR Max. (mΩ)	Rated Current Max. (mA)	SRF Min (MHz)
ECI-1005-1N0SPN	1.0	8	100	140	300	9000
ECI-1005-1N2SPN	1.2	8	100	140	300	9000
ECI-1005-1N5SPN	1.5	8	100	160	300	6000
ECI-1005-1N8SPN	1.8	8	100	160	300	6000
ECI-1005-2N0SPN	2.0	8	100	180	300	6000
ECI-1005-2N2SPN	2.2	8	100	180	300	6000
ECI-1005-2N7SPN	2.7	8	100	200	300	5000
ECI-1005-3N0SPN	3.0	8	100	200	300	5000
ECI-1005-3N3SPN	3.3	8	100	220	300	5000
ECI-1005-3N9SPN	3.9	8	100	220	300	4000
ECI-1005-4N7SPN	4.7	8	100	240	300	4000
ECI-1005-5N1SPN	5.1	8	100	270	300	4000
ECI-1005-5N6SPN	5.6	8	100	270	300	4000
ECI-1005-6N8JPN	6.8	8	100	320	300	3900
ECI-1005-8N2JPN	8.2	8	100	400	300	3500
ECI-1005-10NJPN	10	8	100	440	300	3200
ECI-1005-12NJPN	12	8	100	500	300	2500
ECI-1005-15NJPN	15	8	100	600	300	2000
ECI-1005-18NJPN	18	8	100	700	300	2000
ECI-1005-22NJPN	22	8	100	900	300	1600
ECI-1005-27NJPN	27	8	100	1000	300	1400
ECI-1005-33NJPN	33	8	100	1200	200	1200
ECI-1005-39NJPN	39	8	100	1200	200	1100
ECI-1005-47NJPN	47	8	100	1400	200	900
ECI-1005-56NJPN	56	8	100	1400	200	750
ECI-1005-68NJPN	68	8	100	1500	180	750
ECI-1005-82NJPN	82	8	100	1700	150	600
ECI-1005-101JPN	100	8	100	1800	150	500
ECI-1005-121JPN	120	8	100	2000	150	500
ECI-1005-151JPN	150	8	100	2400	140	400

**1608 size****Specification**

Part Number	Inductance (nH)	Q (Min.)	L & Q Test Freq. (MHz)	DCR Max. (mΩ)	Rated Current Max. (mA)	SRF Min (MHz)
ECI-1608-1N0SPN	1.0	8	100	120	300	5500
ECI-1608-1N2SPN	1.2	8	100	120	300	5500
ECI-1608-1N5SPN	1.5	8	100	120	300	5000
ECI-1608-1N8SPN	1.8	8	100	120	300	5000
ECI-1608-2N2SPN	2.2	8	100	120	300	4000
ECI-1608-2N7SPN	2.7	10	100	150	300	4000
ECI-1608-3N3SPN	3.3	10	100	150	300	4000
ECI-1608-3N9SPN	3.9	10	100	180	300	4000
ECI-1608-4N7SPN	4.7	10	100	200	300	4000
ECI-1608-5N6SPN	5.6	10	100	230	300	4000
ECI-1608-6N8JPN	6.8	10	100	250	300	3000
ECI-1608-8N2JPN	8.2	10	100	300	300	3000
ECI-1608-10NJPN	10	12	100	300	300	3000
ECI-1608-12NJPN	12	12	100	350	300	2500
ECI-1608-15NJPN	15	12	100	400	300	2000
ECI-1608-18NJPN	18	12	100	450	300	2000
ECI-1608-22NJPN	22	12	100	550	300	1600
ECI-1608-27NJPN	27	12	100	600	300	1400
ECI-1608-33NJPN	33	12	100	660	300	1200
ECI-1608-39NJPN	39	12	100	700	300	1100
ECI-1608-47NJPN	47	12	100	800	300	900
ECI-1608-56NJPN	56	12	100	900	300	800
ECI-1608-68NJPN	68	12	100	1000	300	700
ECI-1608-82NJPN	82	12	100	1000	300	600
ECI-1608-101JPN	100	12	100	1200	300	600
ECI-1608-121JPN	120	8	50	1500	300	500
ECI-1608-151JPN	150	8	50	1500	300	500
ECI-1608-181JPN	180	8	50	1800	300	400
ECI-1608-221JPN	220	8	50	2000	300	400
ECI-1608-271JPN	270	8	50	2800	150	400
ECI-1608-331JPN	330	8	50	3000	150	350

## 1005 size

### Characteristics



## 1608 size

### Characteristics

